



BatteryStore™ v1.6



User Guide

Trademark

C5100B BatteryStore™ is a trademark of Cadex Electronics Inc. All other trademarks or registered trademarks mentioned herein are the property of their respective owners.

Copyright Notice

Copyright © 2016 by Cadex Electronics Inc. All rights reserved. No part of this publication nor the software and/or firmware controlling Cadex product(s) may be reproduced, transmitted, transcribed, stored in a retrieval system, or translated into any language or computer language in any form or by any means without the express written permission of Cadex Electronics Inc.

Revision Rights

Cadex Electronics Inc. reserves the right to revise this publication and make changes in the contents thereof without obligation to notify any person of such changes. Please contact Cadex Electronics Inc. (service@cadex.com) for suggestions or corrections.

Disclaimer

While every effort is made to ensure that the information contained in this manual and Online Help is accurate and up-to-date, Cadex Electronics Inc. does not warrant or guarantee the accuracy of the contents of this manual and Online Help. Further, Cadex makes no warranties, either expressed or implied, as to the merchantability or fitness for a particular purpose of the C5100B BatteryStore Software and/or its documentation.

In no event will Cadex or its officers or employees be responsible for any consequential, incidental, or indirect damages (including damages for loss or business profits, business interruption, and the like) arising out of the use or inability to use the C5100B BatteryStore Software and/or its documentation.

To obtain service, contact service@cadex.com or visit the Cadex website www.cadex.com/contact-us/cadex-electronics for up to date information.

Table of Contents

| | |
|--|-----------|
| Section 1: Get Started with BatteryStore™ | 5 |
| Welcome to BatteryStore™ | 5 |
| The BatteryStore Software Package | 6 |
| Computer Requirements | 6 |
| Receipt Printer Compatibility | 6 |
| Receipt Printer Installation | 7 |
| Install BatteryStore | 8 |
| Uninstall BatteryStore | 8 |
| Software Updates | 8 |
| The Menu Bar | 9 |
| Connect a C5100B to the PC | 10 |
| Connect a C5100B to BatteryStore | 10 |
| Exit the BatteryStore Application | 11 |
| Section 2: Test, Cycle and Charge Batteries | 12 |
| Perform a Battery Test | 12 |
| Section 3: Manage Test Results | 16 |
| Manage Test Results | 16 |
| View Test Results | 17 |
| Print Test Results | 18 |
| Export Test Results | 18 |
| Save Test Results | 19 |
| Delete Test Results | 19 |
| Search for Test Results | 20 |
| Sort the Test Results | 20 |
| View a Test Summary Report | 21 |
| Section 4: Configure BatteryStore™ Options | 22 |
| BatteryStore Options | 22 |
| Site Information Setup | 23 |
| Printer Setup | 25 |
| Test Report Template | 26 |
| Section 5: C5100B Setup | 28 |

C5100B Setup.....28

 Target Capacity.....29

 C5100B Printer Setup29

 Firmware Update30

Section 6: Update and Backup the Battery Models Database34

 Battery Models and Q-Codes Update34

 Backup the Battery Models Database.....37

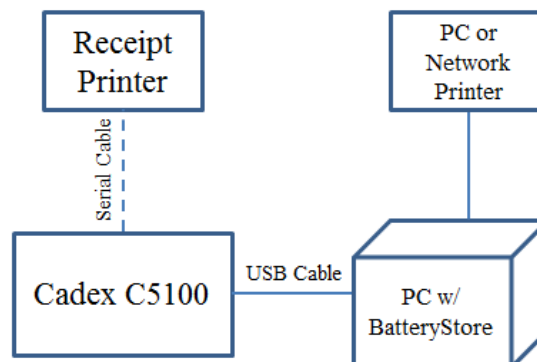
Section 1: Get Started with BatteryStore™

Welcome to BatteryStore™

BatteryStore™ is Microsoft Windows-based software that lets users start and monitor battery tests on a C5100B and stores battery test result histories in a database.

BatteryStore can export test data, consolidate tests, provide test reports, and generate performance summaries. **BatteryStore** also provides the ability to print receipts and customize service reports.

PC Mode (Tethered Mode)



The PC with **BatteryStore** is used for:

- a. C5100B Control (Test, Charge, or Cycle)
 - QuickSort™ Test
 - QuickSort™ 3.0 (QSMS) Test
 - QuickSort™ 4.0 Test
- b. Data Management: Store and export test results

- c. PC or Network Printing: Prints a test report
- d. Optional Receipt Printing: Prints test results on a 2.25" [57mm] wide receipt

How to setup up PC Mode:

1. Connect hardware according to the PC Mode diagram
2. Configure **BatteryStore** Options ([Section 4](#))
 - a. Site information
 - b. Printer Setup
 - c. Report template

The BatteryStore Software Package

The **Cadex C5100B BatteryStore** software package contains the following items:

- Cadex C5100B **BatteryStore** Software
- BatteryStore Installation Guide

Computer Requirements

BatteryStore requires the following computer configuration:

- Windows 7, 8, or 10
- 1.2 GHz or faster CPU
- 512 MB RAM
- PC with USB port
- An SVGA color monitor 1024 x 768 or better, 256 colors minimum; mouse & keyboard

Receipt Printer Compatibility

The **C5100B** can be configured to print test results on a 2.25" [57mm] wide receipt. The **C5100B** and **BatteryStore** are compatible with the *Bixolon STP-103 III* thermal printer (sold separately).

Receipt Printer Installation

The Bixolon STP-103 III thermal printer requires the following installation steps.

1. Connect DB9 Male-to-male Adapter into the C5100B serial port (back of device)
2. Set the DIP switches on the Bixolon STP-103 III thermal printer:

- a. Serial Interface settings

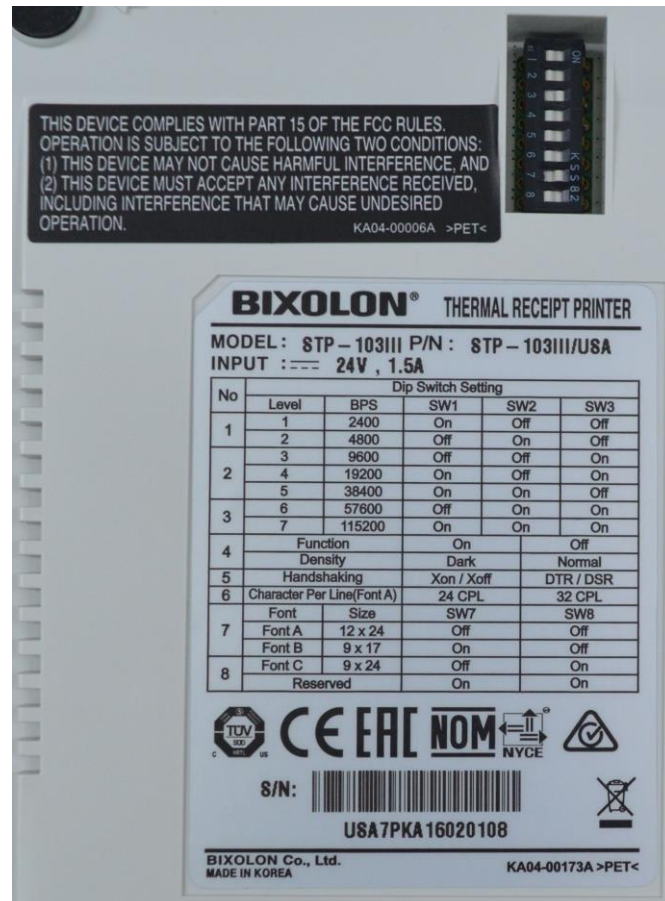
Baud rate: 9600 bps

Data bits: 8 bits

Parity: None

Stop bit: 1 bit

The serial interface settings are required in order for the **C5100B** to correctly communicate with the thermal printer. See figure below for printer underside.



3. Follow the *Printer Installation Guide* that is included with the Bixolon STP-103 III thermal printer

Install BatteryStore

To install **BatteryStore**:

1. Download the latest version from the Cadex website:

<http://www.cadex.com/en/subscriptions>

Password: victoria

The download is a compressed executable file (with file extension .MSI)

2. Open the folder where the downloaded file was stored and double-click **BatteryStore.msi** to install **BatteryStore**. The **Welcome to Cadex BatteryStore Setup Wizard** window appears.
3. Follow the steps through the installation wizard

Uninstall BatteryStore

To remove **BatteryStore** from your computer:

1. In *Control Panel*, go to **Uninstall a program**
2. Select **Cadex BatteryStore** and click **Uninstall**

Software Updates

To see which version of **BatteryStore** is installed on the computer, select **About** from the **Help** menu. The **BatteryStore** version appears in the **About** window.

Update BatteryStore Software

When a new version of **BatteryStore** becomes available, it can be downloaded from the Cadex website:

<http://www.cadex.com/en/subscriptions>

Password: victoria

The download is a compressed executable file (with file extension .MSI)

Running the downloaded executable will either run **Setup** and install a new version of the software, or extract files to a specified directory.

The Menu Bar

BatteryStore Main window displays a title screen, a menu bar, and a C5100B status bar.



The menu bar on **BatteryStore Main** window displays six menus: *File*, *Test*, *Results*, *Options*, *C5100B Setup*, and *Help*. By clicking any of these menus displays a list of menu commands.

File Menu

The **File** menu contains two items, as follows:

Connect: Establishes communication between C5100B and PC

Exit: Select *Exit* to close **BatteryStore**

Test Menu

Click *Test* to test a battery on a C5100B.

Results Menu

Click *Results* to view battery test results.

Options Menu

Click *Options* to specify site information, printer setup, report template fields, battery models information and database maintenance options.

C5100B Setup Menu

Click *C5100 Setup* to write and read the C5100B configuration, including the receipt printer settings.

Help Menu

The **Help** menu contains two items, as follows:

Help Content: Click *Help Content* to view this manual

About: Click *About* to view the **About** window

Connect a C5100B to the PC

To connect a C5100B to the PC:

1. Connect one end of the USB cable to the PC
2. Connect the other end of the USB cable to the backside of the C5100B

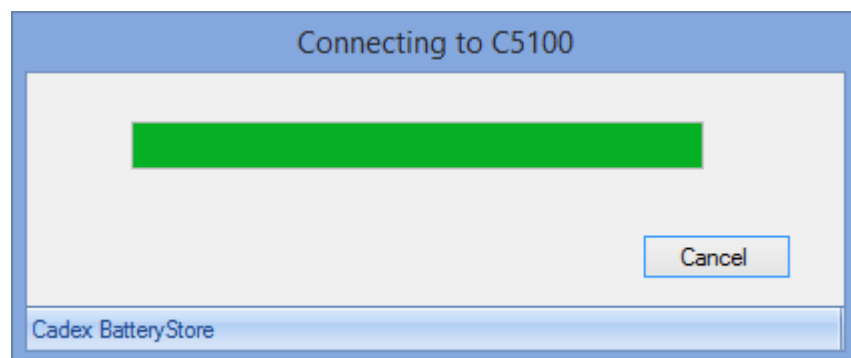
Connect a C5100B to BatteryStore



NOTE

BatteryStore automatically connects to a C5100B when BatteryStore starts up.

Select *Connect* from the **File** menu to connect a C5100B to **BatteryStore**. The **Connecting to C5100** window appears.



If the connection was successful, the C5100B is listed on the **C5100 Status** bar.

Exit the BatteryStore Application

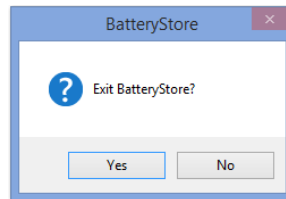
To close the **BatteryStore** application:

- From the **File** menu, select *Exit*

Or

- Click **X** at the top-right corner

The **Exit** window appears.



Click **Yes** to exit **BatteryStore**.

Section 2: Test, Cycle and Charge Batteries

Perform a Battery Test



WARNING

Do not remove the C5100B battery adapter while the C5100B is running a test or updating the firmware.



NOTE

Test results are retained on the C5100B until a new test is initiated. Therefore, additional copies of receipts can be printed without running the test a second time.

The result from a test, cycle, or charge is automatically saved in the Results Section.

To perform a battery test, click the **Test** menu item. The **Battery Test** window appears.

| Battery Test Methods | |
|----------------------|---|
| Test | Performs rapid battery tests using Cadex’s QuickSort™ Technology. |
| Charge | Charges a battery. Approximately 3 hrs. |
| Cycle | Cycles a battery with charge/discharge/charge and displays measured capacity as a percentage of the Q-Code/C-Code capacity rated value. Approximately 7 |

| | |
|--|------|
| | hrs. |
|--|------|

A battery test contains the following steps:

1. Select the battery's nominal voltage
2. Select the battery's nominal (rated) capacity
3. Run a battery test
4. Print the receipt or test report

Step 1: Select the Battery Model

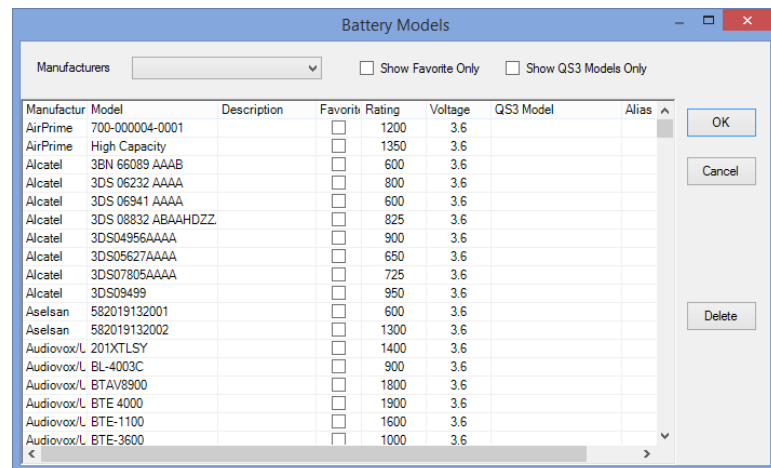
The **Battery Test** window provides two methods to select a battery model:

- User Specified Rating: Input the nominal battery capacity mAh in the field (this information should be located on the battery label). This method triggers either QuickSort™ (below 1400mAh) or QuickSort™ 4.0 (1400mAh or above).

Or

- Select Battery: Select a battery model from the list. If your battery model cannot be located, use the other option. This method triggers QuickSort™ 3.0 (QSMS), if available.

In the *Select Battery* option, click **Select Battery** button. The **Battery Models** window appears.



In the **Battery Models** window, click the DOWN ARROW in the *Manufacturers* field to view a list of battery models manufactured by a specific company.



NOTE

You can update the list of battery models by entering new models or downloading an updated database from the Cadex website (see [Update and Backup the Battery Models Database](#)).

The **Battery Models** window lists all available battery models. For each battery model, the window shows the manufacturer's name, the battery's model number, the rating, nominal voltage, the alias, and the QS3 model, if applicable. To set a specific battery model as a "favorite", select the check box in the **Favorite** column. To view only those battery models selected as favorites, select the *Show Favorites Only* check box.

Show QS3 Models Only lists all available QuickSort™ 3.0 (QS3) battery models. For each battery model, the window shows the manufacturer's name, the battery model's number, the rating, nominal voltage, the alias, and the QS3 model. To view only QS3 battery models, select the *Show QS3 Models Only* check box.

Step 2: Run a Battery Test, Charge, or Cycle

In the *User ID* field, type an identification code for a customer or employee. Type any notes in the *Service Notes* field, as required. To test the battery, click **Test**. To charge the battery, click **Charge**. To discharge and then charge the battery, click **Cycle**.

The *Test Status* field indicates the status of the test:

- A progress bar is used to show the progress of the current test
- A Cancel button is used to halt the test
- Finish – the test has completed.

The *Test Log* field contains additional information about the test status and test result.

Step 3: Print the Receipt or Test Report

BatteryStore prints receipts on a standalone receipt printer and test reports on a PC printer. Configure the default printer in the **Options->Printer Setup** window.

1. Standalone Receipt Printer

Go to **C5100 Setup** to configure receipt printer. (**Note:** To activate Receipt printing, ensure the C5100B printer is not set to disabled).

2. PC Printer

Go to **Options->Printer Setup** to configure PC printer.

The **Print** button prints to the default printer.

The *Auto Print Test Report* option automatically prints the test report or receipt when the test is completed – you do not need to click **Print**.

Section 3: Manage Test Results

Manage Test Results

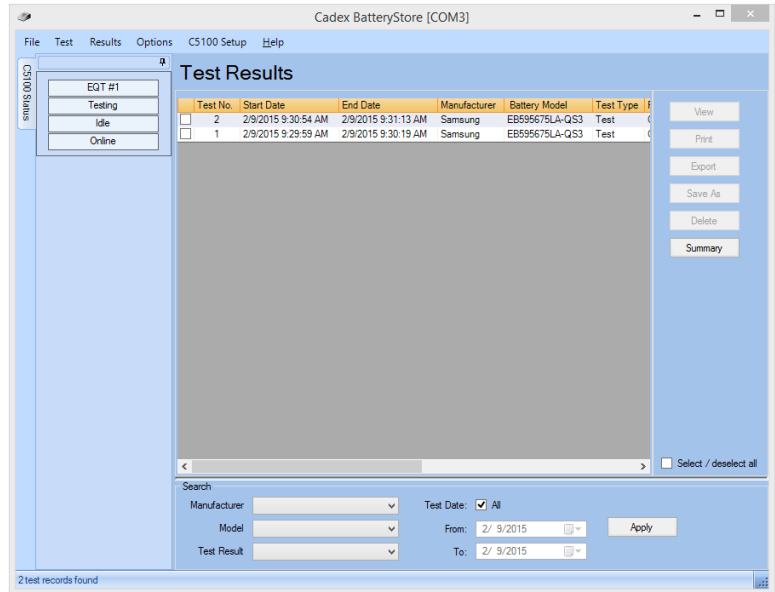
The **Test Results** window lists all battery test reports. For each test result, the **Test Results** lists:

- Test number, test type, and test result
- Start and end date & time of test
- Battery manufacturer's name and battery model
- Fault code, if any
- Capacity rating, voltage rating, and equipment ID
- C5100B firmware revision number

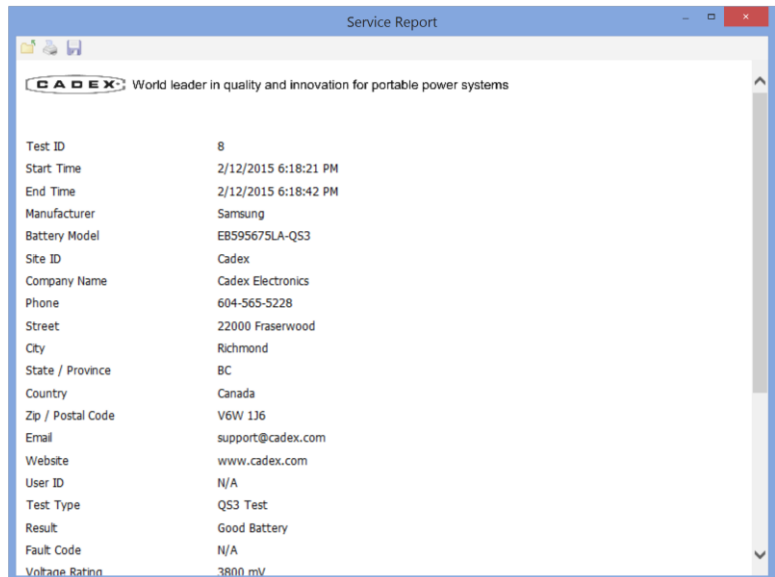
You can view and print test reports, export a test report to a comma-delimited text file, save the test report as a PDF file, view a summary, or delete the test report.

View Test Results

To view a test result, click the **Results** menu item. The **Test Results** window appears.



Highlight a test result and click **View**. The test result appears in the **Service Report** window.



To print the test report, click **Print**. To save the test report to a PDF file, click **Save**.

Print Test Results

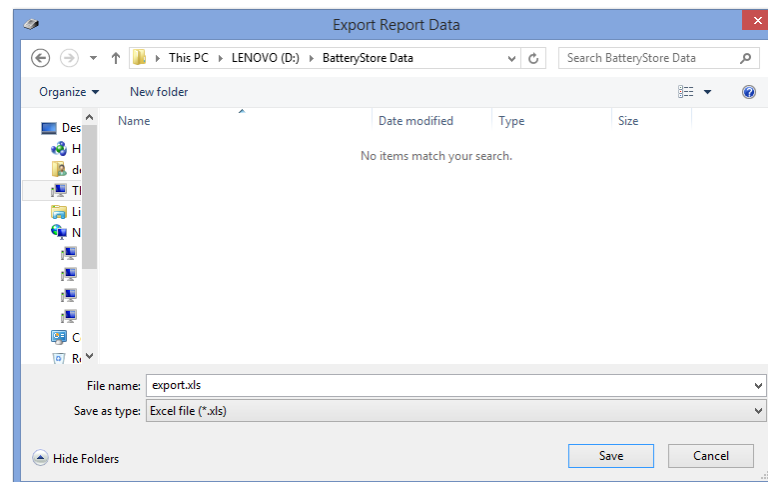
To print a test result, click the **Results** menu item. The **Test Results** window appears.

Click the check box in the left-hand column to select a test result and click **Print**. The report is sent to the default printer. Multiple test reports can be printed by left-clicking multiple test results. Click the *Select/deselect all* check box to quickly select or deselect all test results.

Export Test Results

To export a test result to file, click the **Results** menu item. The **Test Results** window appears.

Select the check box adjacent to each test result to export and click **Export**. The **Export Report Data** window appears.

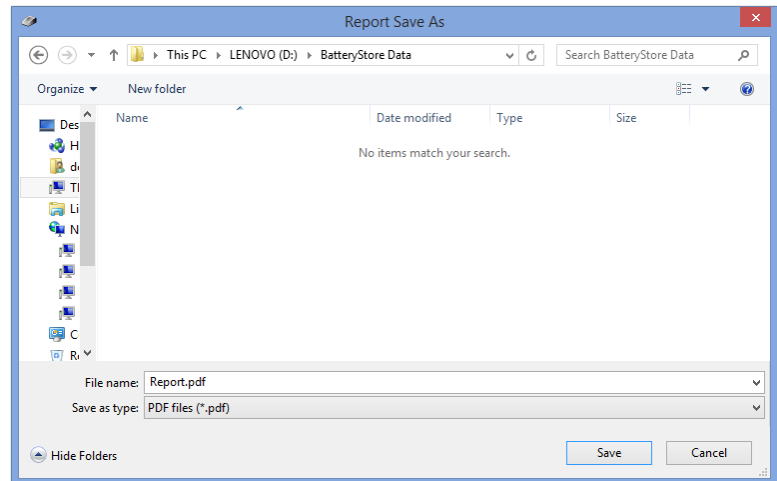


In the *File Name* field, type a name for the report and click **Save**. The report may be saved with an Excel (.xls) format or comma separated value (.csv) format.

Save Test Results

To save a test result, click the **Results** menu item. The **Test Results** window appears.

Select the check box adjacent to the test result to save and click **Save As**. The **Report Save As** window appears.

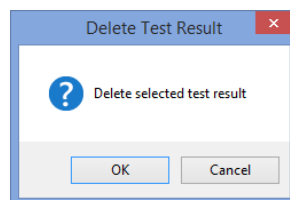


In the *File Name* field, type a name for the report and click **Save**. The test result report may be saved in PDF (.pdf), HTML (.html), and text (.txt) file formats.

Delete Test Results

To delete a test result, click the **Results** menu item. The **Test Results** window appears.

Select the check box adjacent to test result to delete and click **Delete**. The **Delete Test Result** window appears.



Click **OK** to permanently delete the selected test results.

Search for Test Results

The **BatteryStore** database may contain hundreds, or even thousands of test results. The *Search* section of the **Test Results** window lets you search for specific test results.



To search for results based on the battery manufacturer's name, the battery's model, or by the test result (good, fair, poor, or low battery), click the DOWN ARROW in the appropriate field and select the criteria.

To search for results based on a date, deselect the *All* check box and then click the DOWN ARROW in the *From* field. Next, click the DOWN ARROW in the *To* field and select the ending date.

Click **Apply** to search for the test results.

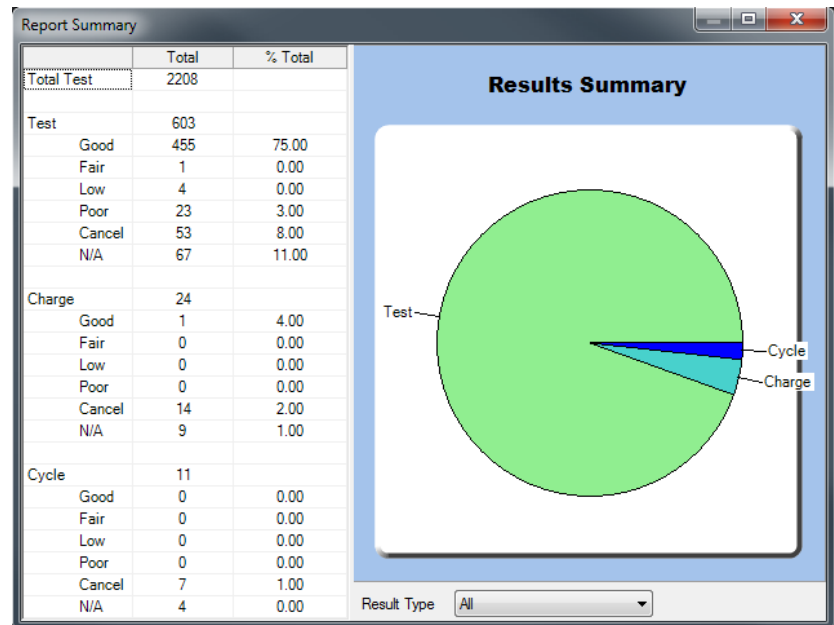
Sort the Test Results

To sort the test results, click the **Results** menu item. The **Test Results** window appears.

To sort the test results, click the column header. The test results are sorted in ascending order. Click the column header a second time to reverse the sort order.

View a Test Summary Report

To view a summary of test results, click the **Results** menu item, then click the **Summary** button. The **Report Summary** window appears.



The **Report Summary** window shows a breakdown of all the tests that were performed.



NOTE

The **Report Summary** will only display test results that are active in the test results window. For instance, to view the **Results Summary** for a specific Battery Manufacturer or for a specific time, apply the Search tools (Search for Test Results section) to modify the list of test results.

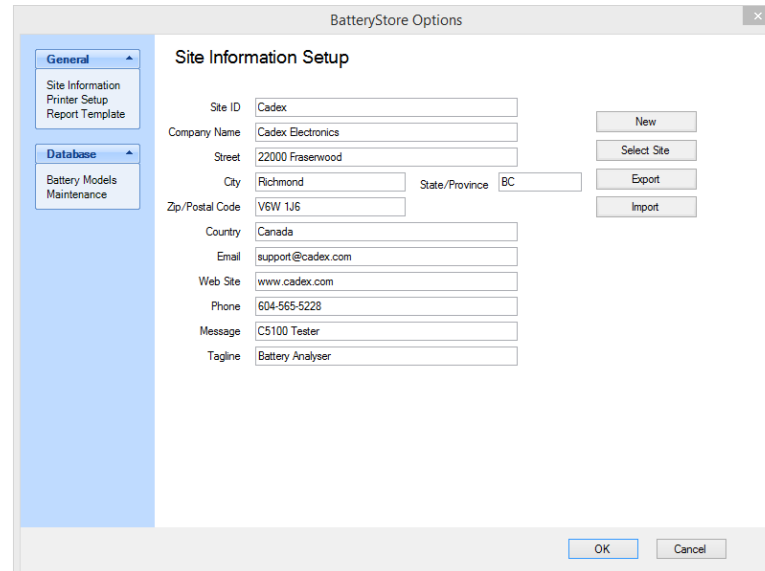
View different Result summaries by clicking the DOWN ARROW in the *Result Type* field and selecting between All, Test, Charge, and Cycle.

Section 4: Configure BatteryStore™ Options

BatteryStore Options

The information in the **Site Information Setup** window appears in Test reports and is the default information that appears in the **C5100 Setup** window.

To configure **BatteryStore's** options, click the **Options** menu item. The **BatteryStore Options** window appears.



The screenshot shows the 'BatteryStore Options' window. On the left is a sidebar with two tabs: 'General' (selected) and 'Database'. Under 'General' are 'Site Information', 'Printer Setup', and 'Report Template'. Under 'Database' are 'Battery Models' and 'Maintenance'. The main area is titled 'Site Information Setup' and contains the following fields: Site ID (Cadex), Company Name (Cadex Electronics), Street (22000 Fraserwood), City (Richmond), State/Province (BC), Zip/Postal Code (V6W 1J6), Country (Canada), Email (support@cadex.com), Web Site (www.cadex.com), Phone (604-565-5228), Message (C5100 Tester), and Tagline (Battery Analyser). To the right of these fields are buttons for 'New', 'Select Site', 'Export', and 'Import'. At the bottom right are 'OK' and 'Cancel' buttons.

The **General** tab contains *Site Information*, *Printer Setup*, and *Report Template* option settings. The **Database** tab contains *Battery Models* and *Maintenance* option settings. Click the appropriate tab to see the list of options.

Site Information Setup

BatteryStore can save customer site information. For each site, **BatteryStore** saves the site ID, company name, address, and contact information.

To manage site and contact information, click the **Site Information** menu item under **General** tab. The **Site Information Setup** window appears.

The default customer site's information appears in the **Site Information Setup** window. If required, type new information about the customer's site in the appropriate fields and click **OK** to save the information.

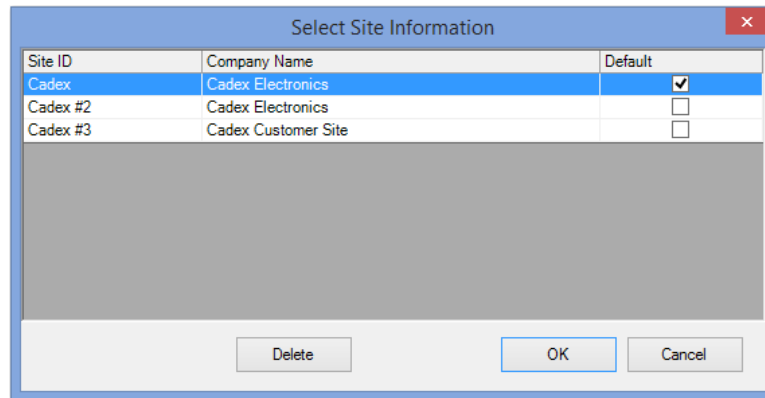
Create New Site Information

To create new site information setup, click **New**. A blank **Site Information Setup** window appears.

Type the information in the appropriate fields for the new customer site. Click **OK** to save the information.

View Site Information

To view information about a specific site, click **Select Site**. The **Select Site Information** window appears.

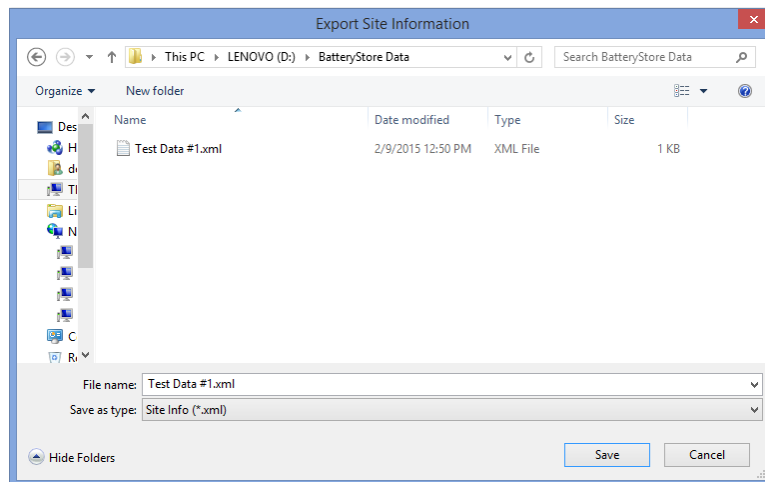


The **Select Site Information** window lists the sites in the database. Select the site to view and click **OK**. The site's information appears in the **Site Information Setup** window.

To delete a site, select the site and click **Delete**.

Export Site Information

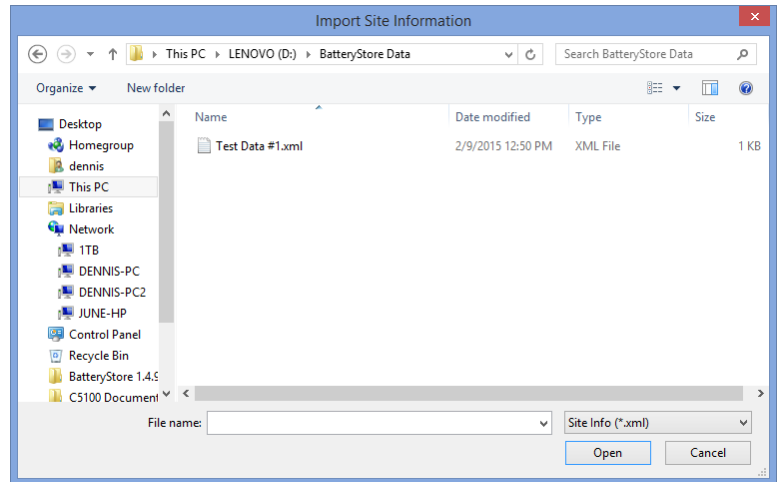
Information about each site can be exported to a *Site Information* file. To export the site information, click **Export**. The **Save As** window appears.



Type a name for the site information file in the *File name* field and click **Save**. The site information is saved to the file in (.xml) format.

Import Site Information

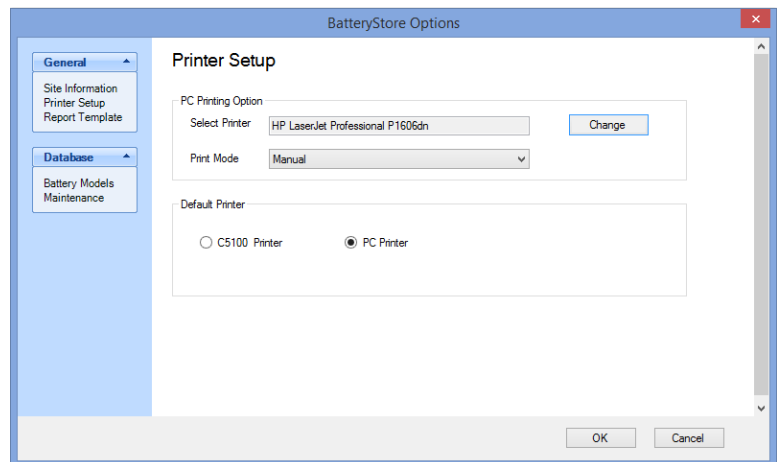
Information about sites can be imported into **BatteryStore** from a *Battery Customer Site* (.xml) file. To import the site information, click **Import**. The **Open** window appears.



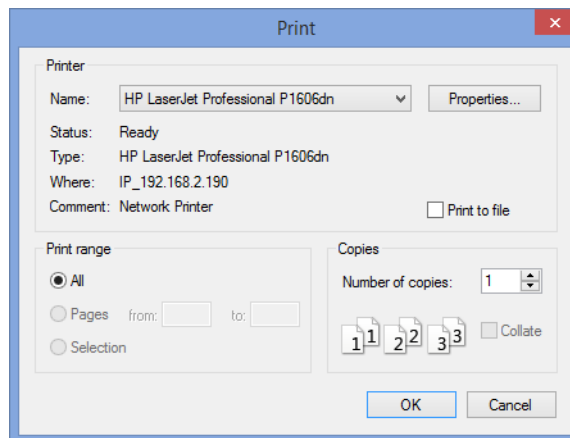
Locate the text file that contains the site information and click **Open**. The site information is imported into **BatteryStore**'s site database.

Printer Setup

To configure printer setup, click the **Printer Setup** menu item under the General tab. The **Printer Setup** window appears.



In the *PC Printing Options* section of the **Printer Setup** window, select the printer to use by clicking **Change**. The **Print** window appears.



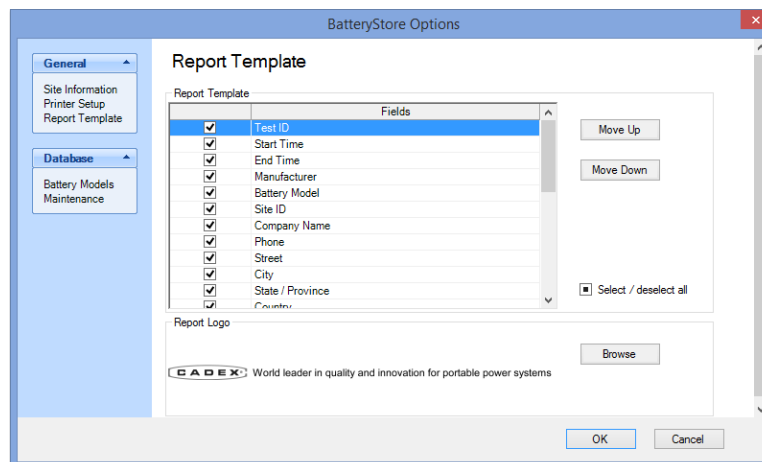
Select the appropriate printer **BatteryStore** will use to print test reports and click **OK**.

Click the DOWN ARROW in the *Print Mode* field and select the printing mode. Select the *Manual* option to require the user to click **Print** on the Test page to manually print the test report when the battery test is completed; select the *Auto* option to print the test report automatically when the battery test is completed.

In the *Default Printer* section of the **Printer Setup** window, select the *C5100B Printer* or the *PC Printer* option to select the printer that **BatteryStore** will use to print.

Test Report Template

To specify the fields that will appear on printed test reports, click the **General** tab and then click **Report Template**. The **Report Template** window appears.



By default, all field names are automatically selected. Clear the check box next to a field's name to exclude that field from the

report. Select the check box next to the field's name to include that field in the report. To select all field names, select the *Select/deselect all* check box; to remove all field names, deselect the *Select/deselect all* check box.

To move the position of a field up or down in the report, click the field name and then click **Move Up** or **Move Down**. This sets the order that the fields will appear in reports using this template.

When you have finished selecting the fields for the report template, click **OK** to save the template.

To print a company logo on the report, click **Browse**. The **Select Report Logo** window appears.

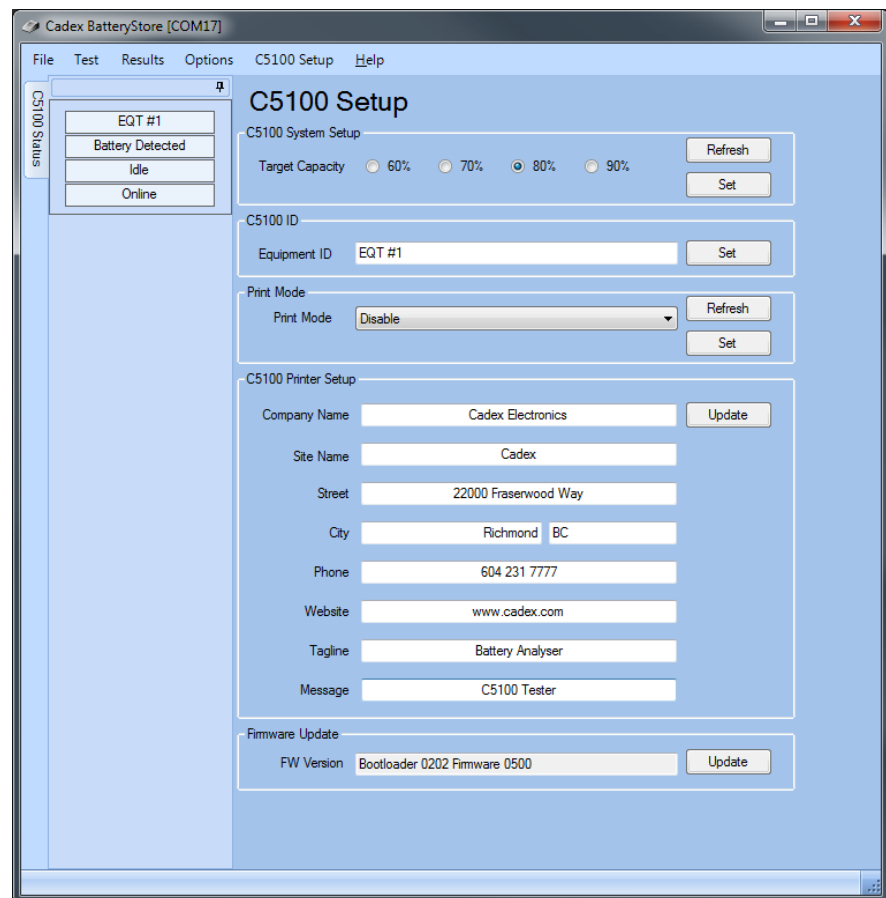
Logo files can be JPG or BMP files. Navigate to the folder that contains the logo file, select the file, and click **Open**. The logo file's image appears in the *Report Logo* section of the **Report Template** window.

When you have finished selecting the options for the report template, click **OK** to save the template.

Section 5: C5100 Setup

C5100B Setup

The **C5100 Setup** window is used for target capacity, receipt printing and firmware update. A user can assign desirable target capacity and print mode onto the C5100B or read settings from the C5100B by clicking **Refresh** buttons.

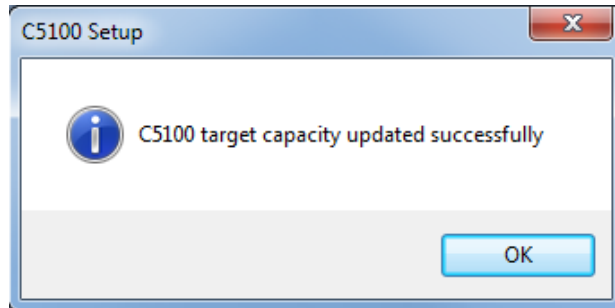


Target Capacity

The new firmware has adjustable user defined target capacity. All QuickSort™ 4.0 test and Cycle results will display Good or Poor based on this setting.

To configure *Target Capacity* setting, choose one of following options: 60%, 70%, 80%, or 90%.

Click **Set** to save the *Target Capacity* setting or click **Refresh** to retrieve the C5100B's current *Target Capacity* setup.



C5100B Printer Setup

The information in the **C5100 Setup** window is used when printing receipts from a network printer or the Bixolon's thermal printer.

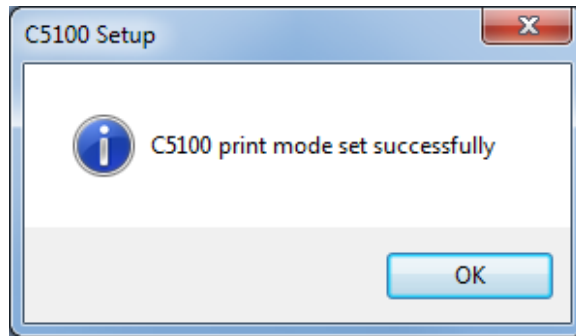
To configure the receipt printer information, click the **C5100 Setup** menu item. The **C5100 Setup** window appears.

In the *Equipment ID* field, type identification numbers or alphabets (up to 10 characters) to associate with the selected C5100B.

Click the DOWN ARROW in the *Print Mode* field and select the printer option, as follows:

- *Disable*: The default printer will not be used.
- *Manual*: When the battery test is completed, click **Print** on the Test page to manually print the test receipt.
- *Auto*: When the battery test is completed, the test receipt is automatically printed. Additional receipts can be printed by clicking the **Print** button.

Click **Set** to save the *Print Mode* setting or click **Refresh** to retrieve the C5100's current *Print Mode* setup.



In the *C5100 Printer Setup* section of the **C5100B Setup** window:

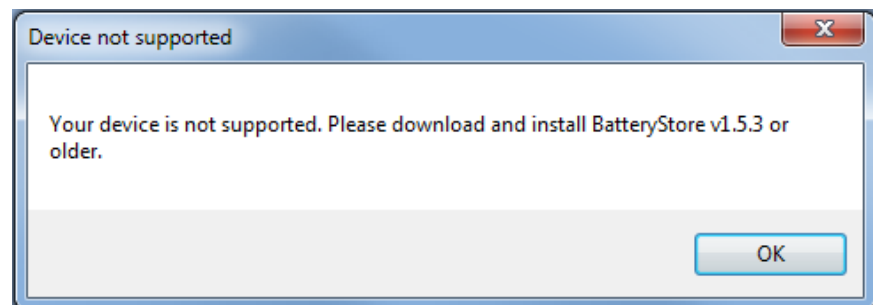
- The **Site Information** window under **Options** should be filled out first as this information is automatically transferred to the **C5100 Setup** window by default. Click **Update** to save the information to the C5100B.
- The date and time information shown in the PC are automatically sent to the C5100B for printing in stand-alone mode.

Firmware Update

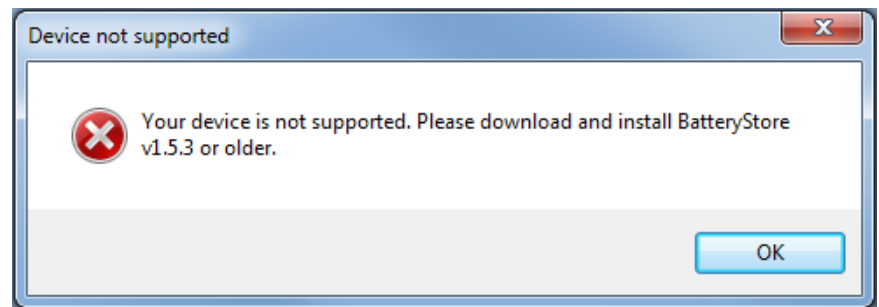
The *FW Version* field displays the version of the firmware installed in the connected C5100B. Select the **Update** button and follow the Firmware Utility directions to upgrade the firmware.

Note: During connection, **BatteryStore** identifies if your C5100 is an older version (see figures below). Update the C5100B firmware using **Cadex C5100 Firmware Utility** to ensure correct operation of **BatteryStore**.

BatteryStore first opened:

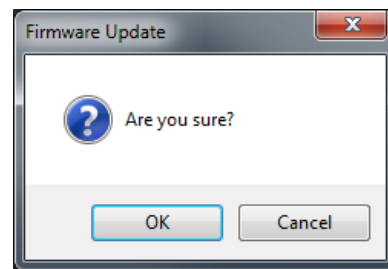


Trying to operate the C5100B in BatteryStore:

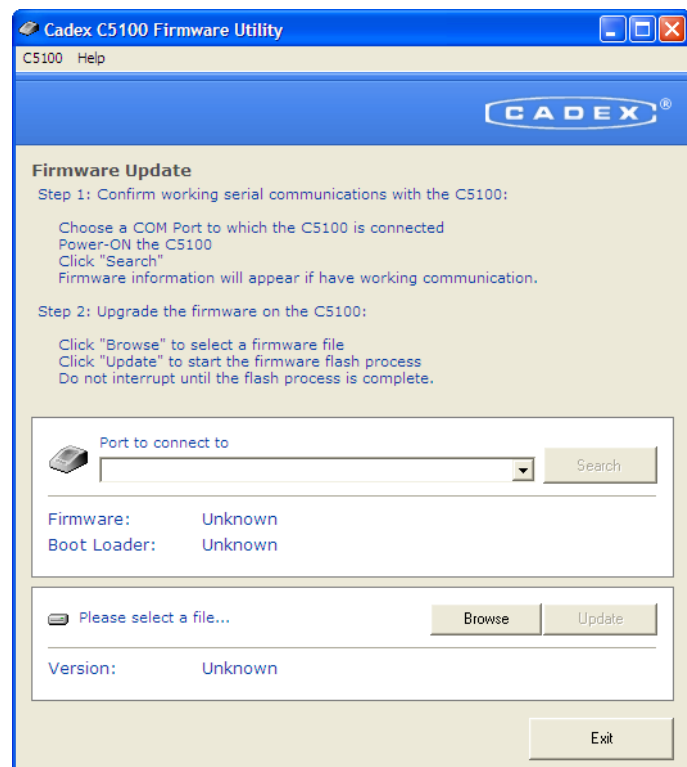


To update the C5100's Firmware:

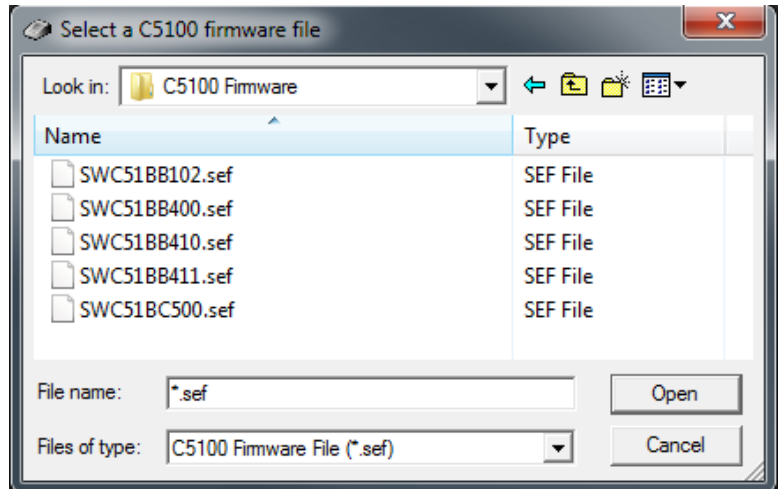
1. Select **Update** from the *Firmware Update* section.



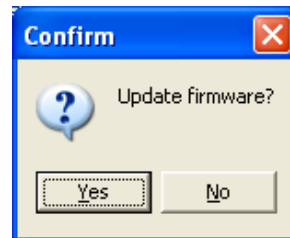
2. Click **OK** to update the firmware or **Cancel** to return to the **C5100 Setup** window.
3. *Cadex C5100 Firmware Utility* window appears.



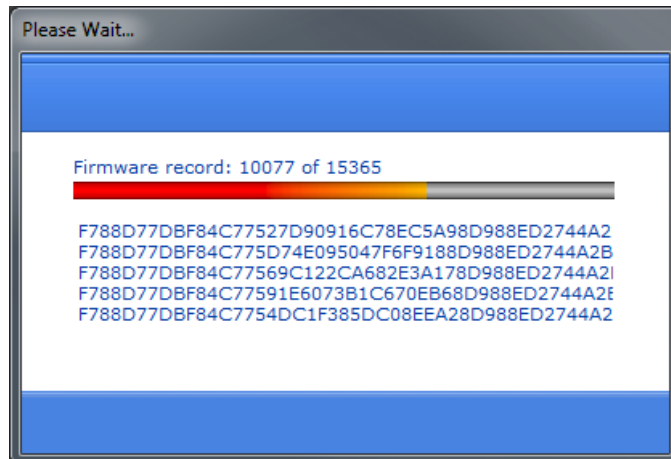
4. Click the DOWN ARROW in the *Port to connect to* field to select the COM port that the C5100B is connected to. Ensure AC power is applied to the C5100B and USB cable with a Type B connector is connected from the analyzer to the computer. Click **Search**. If there is a working connection, the firmware information appears.
5. Click **Browse** to select a firmware file (firmware files have a file extension .sef) and click **Open**.



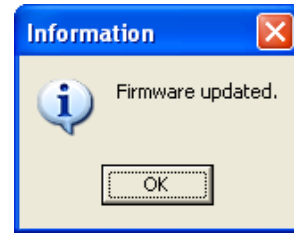
6. Next, click **Update** to initiate the firmware flash process. The **Confirm** window appears.



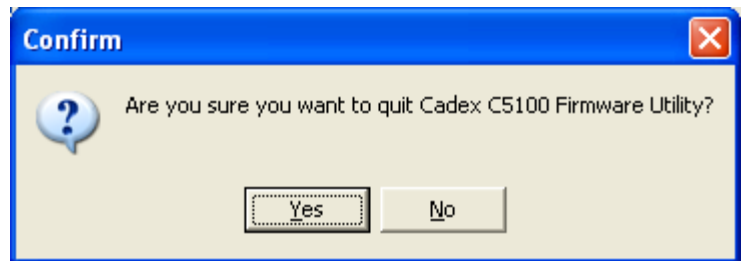
7. Click **Yes** to update the firmware.



8. The **Information** window appears when the firmware has been updated. Click **OK**.



9. Click **Exit**. The **Confirm** window appears. Click **Yes** to exit the firmware utility.



10. Close **BatteryStore** and restart the software.



WARNING

Do not remove the C5100B battery adapter while the C5100B is running a test or updating the firmware.

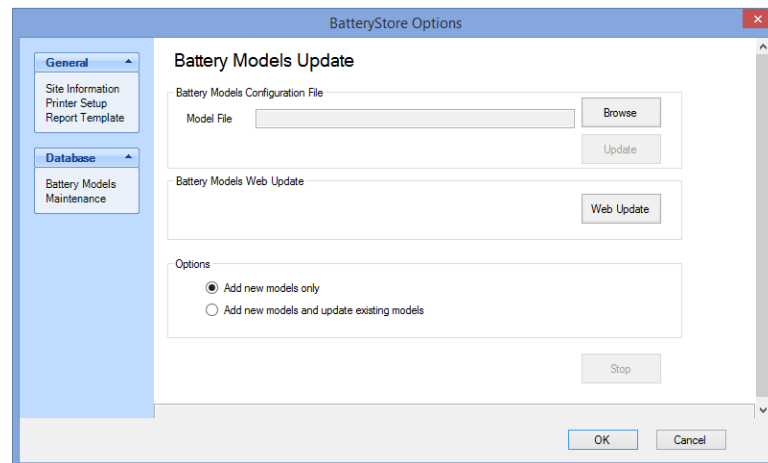
If error messages occur, contact Cadex Technical Support at (Canada) 1-604-231-7777, (USA Toll Free) 1-800-565-5228, or (Europe) +49 (0) 6105 975 11-0, or service@cadex.com.

Section 6: Update and Backup the Battery Models Database

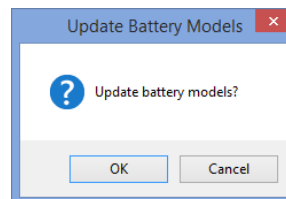
Battery Models and Q-Codes Update

To Update the Battery Models database and Q-Code Library:

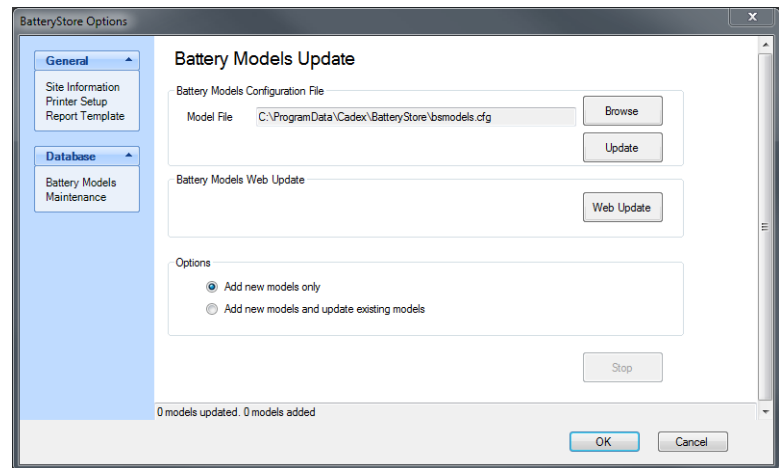
1. Open **BatteryStore**. Select **Options**. Select **Battery Models** under **Database**.
2. While still in the Battery Models Update page, select either *Add new models only* or *Add new models and update existing models*. Select **Web Update**.



3. The **Update Battery Models** window appears.



- Click **OK** to update the database or **Cancel** to return to the **Battery Models Update** window.
- Click **Stop** to cancel the process anytime.
- The number of battery models that were updated and the number of battery models that were added will be shown below.



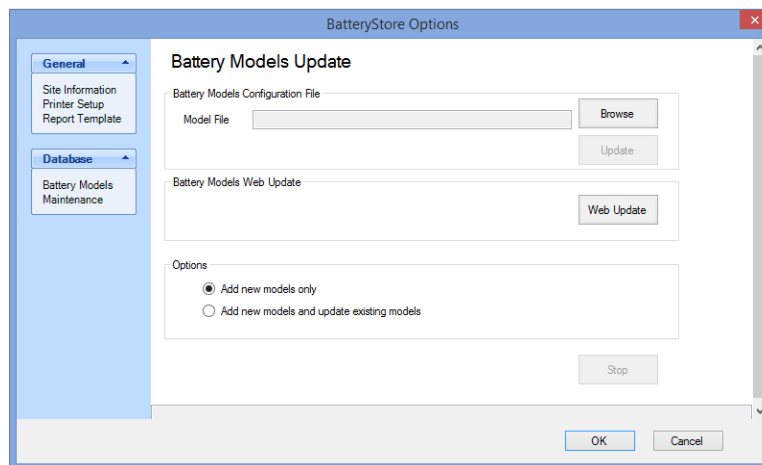
- Click **OK** to return to the **Battery Models Update** window. Next, click **OK** return to **BatteryStore's** active window.

The following steps are only required if you do not have access to the internet. This method requires a database file which can be obtained from:

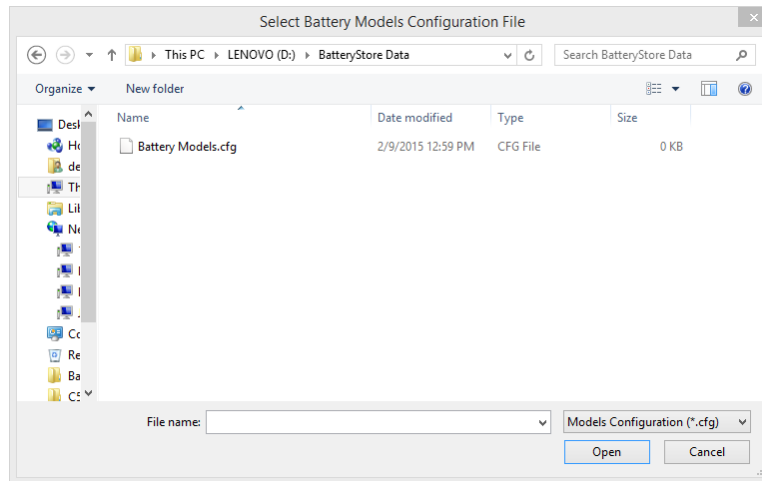
<http://www.cadex.com/en/support/technical>

To Update the Battery Models database and Q-Code Library:

- Save the .CFG database file to your PC. The .CFG file is found on the Cadex website, under Technical Support.
- In the **Options** menu click the **Battery Models** menu item. The **Battery Models Update** window appears.



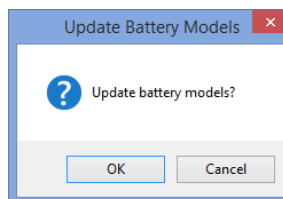
3. To select the file that contains the battery models database file, click **Browse**. The **Select Battery Models Configuration File** window appears.



4. Select the configuration file (configuration files have a file extension .CFG) and click **Open**.

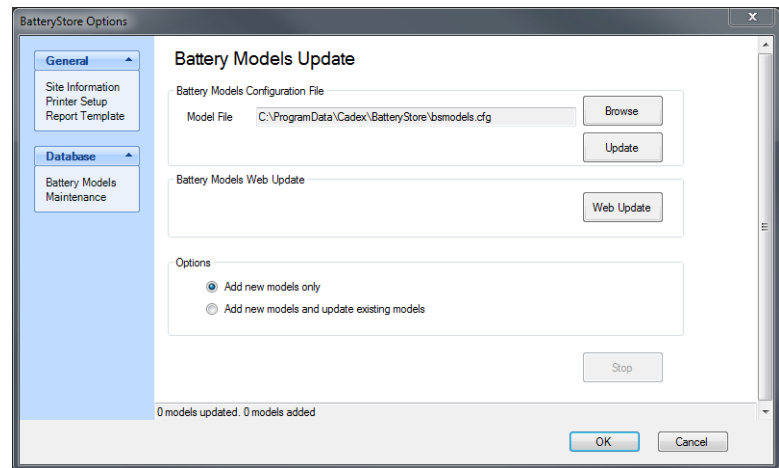
To add battery models that do not exist in the database, select the *Add new models only* option; to add battery models that do not exist in the database and to overwrite existing models, select the *Add new models and overwrite existing models* option. Click **Update**.

5. The **Update Battery Models** window appears.



Click **OK** to update the database or **Cancel** to return to the **Battery Models Update** window.

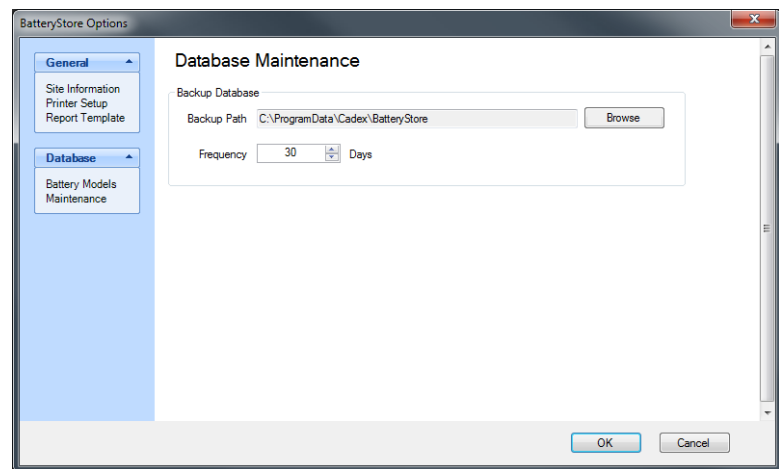
6. Click **Stop** to cancel the process anytime.
7. The number of battery models that were updated and the number of battery models that were added will be shown below.



8. Click **OK** to return to the **Battery Models Update** window. Next, click **OK** return to **BatteryStore's** active window.

Backup the Battery Models Database

BatteryStore can automatically backup your battery models database. To specify the frequency of the backup procedure, select **Maintenance** under **Database**. The **Database Maintenance** window appears.



The backup copy of the battery models database is stored by default in the *C:\ProgramData\Cadex\BatteryStore* folder. To

change the location of the backup file, click **Browse** and choose a different folder.

Click the UP or DOWN ARROW in the *Frequency* field to select how many days should pass before the backup procedure is executed.

Click **OK** to save your maintenance settings.