



Cadex Electronics Inc.
22000 Fraserwood Way, Richmond, BC Canada V6W 1J6
Tel: 604 231-7777 Fax: 604 231-7750
Toll-Free: 1 800 565-5228 (USA & Canada)
E-mail: service@cadex.com Web: www.cadex.com

Application Notes on setting up the C5100 with a standalone Bixelon printer

December 12, 2011

By: Gary Kwok, Cadex Applications Engineering

ABSTRACT

The C5100 is a simple and fast tool used to test and evaluate batteries. This application note will provide details on out to setup the C5100 to print test results via the Bixelon receipt printer.

Prerequisites:

- This document assumes that the user is familiar with the operation of the Cadex C5100 and/or BatteryStore™ software.
- C5100 (Firmware Version 1.00/2.00), BatteryStore (Build 1.0.3 or higher)
- Bixelon STP-103IIG
- RS232 gender changer (M/M)

A. Hardware Setup

On the Bixelon printer, verify the following settings on the DIP switches located on the bottom of the unit.

Baud Rate	9600 bps	Switch 3: ON
Language	English	Switch 7: ON

All other switches should be in the OFF position.



Figure 1 - Bottom of Bixelon Printer

Connect the Bixolon printer to the C5100 via the serial cable (will need the RS232 M/M gender adapter to connect).



Figure 2 – C5100 Back Connections

Do not hook up the USB from the Bixolon to the USB on the C5100. Communications are done only via the RS232 port only.

Connect the C5100 to a computer w/ BatteryStore via the USB connection. A USB cable should have been provided with the C5100. Consult BatteryStore if it's a new install.

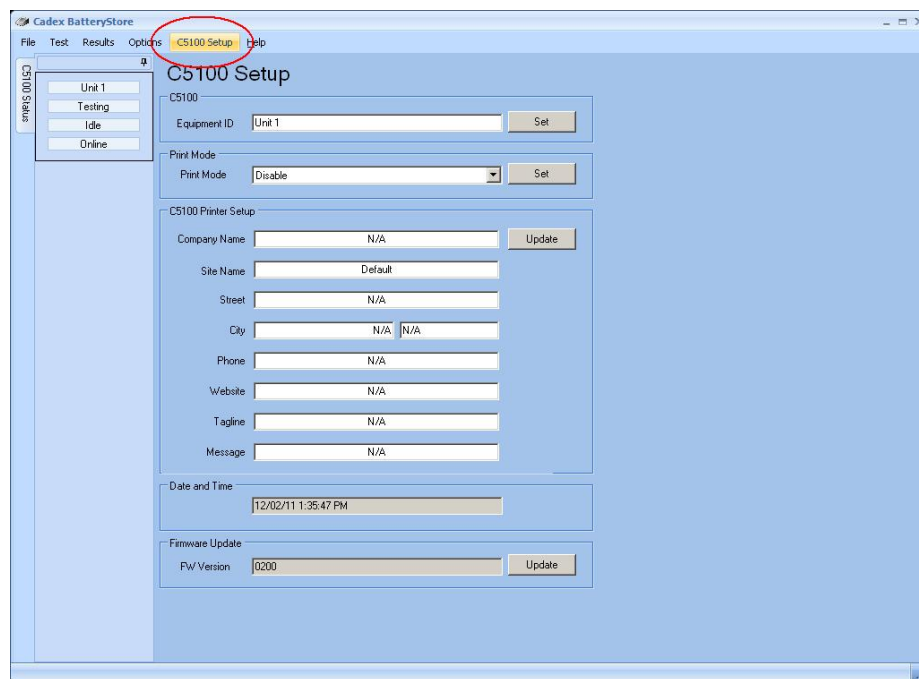
Power up both the C5100 battery tester and Bixolon printer. The Bixolon printer should have a solid green LED. If it's a blinking green LED, press the Online button to change it's state.

B. Software Setup

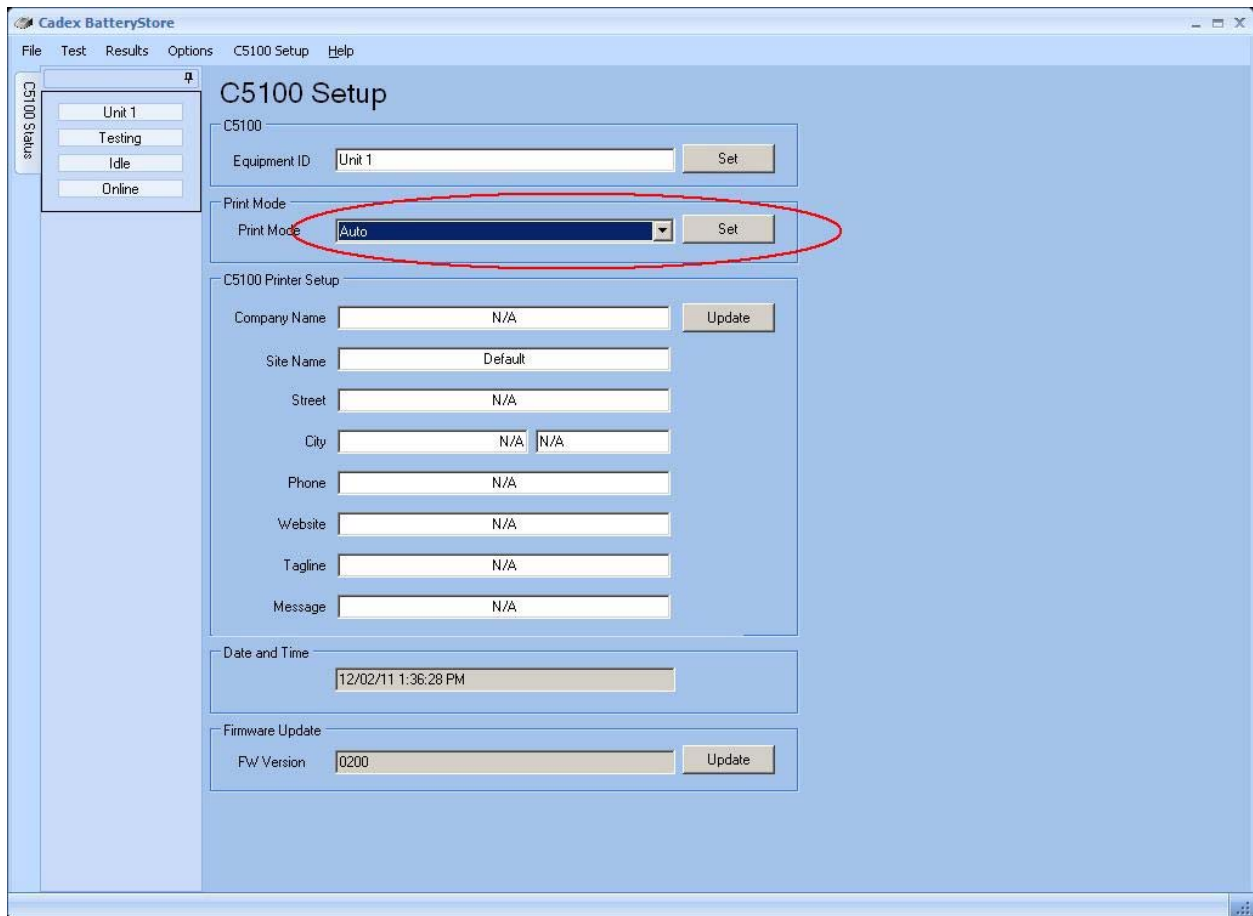
On the computer, start the BatteryStore program. By default, it should have been saved in C:\Program Files\Cadex\BatteryStore. The software will automatically try to connect to the analyzer. The following screen will display.



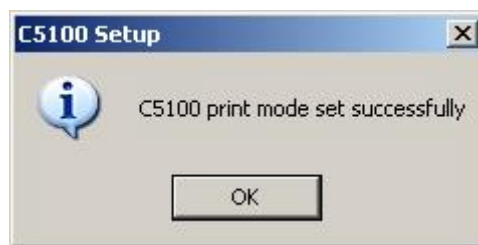
On the top, right click on C5100 Setup. The following screen will display.



Under Print Mode, adjust the setting to Auto and press the Set button. This will program the C5100 to Print results automatically when a test is done.



Once the C5100 is successfully program, a confirmation window will pop up.



At this point, it is recommended to enter in your company information into the fields provided if they have not been populated upon initial setup of BatteryStore. The information shown here will appear on the receipts that are printed

- END -